

Mental health and wellbeing at work



Nicole Rosie

Chief Executive, WorkSafe New Zealand

Health on work – work on health

Government
Health & Safety Lead

New Zealand Government

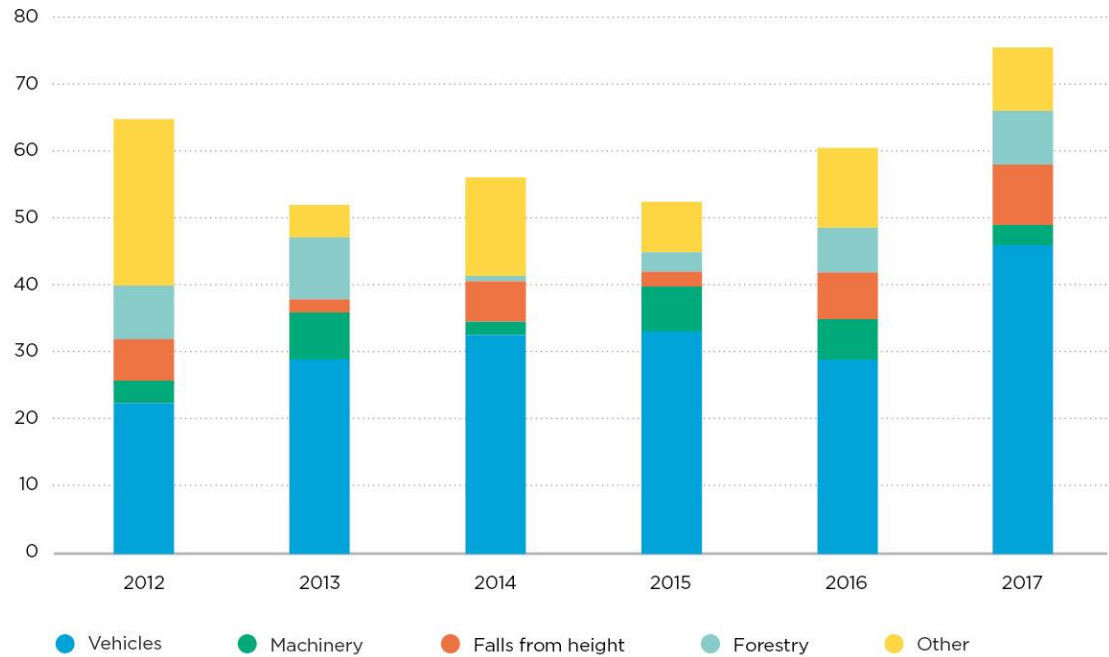
A low-angle, close-up shot of a person's legs and feet as they walk on a grassy field. The person is wearing bright green high-visibility trousers and dark, possibly black, shoes. They are carrying a wooden frame or structure under their arm. The background is a soft-focus green field.

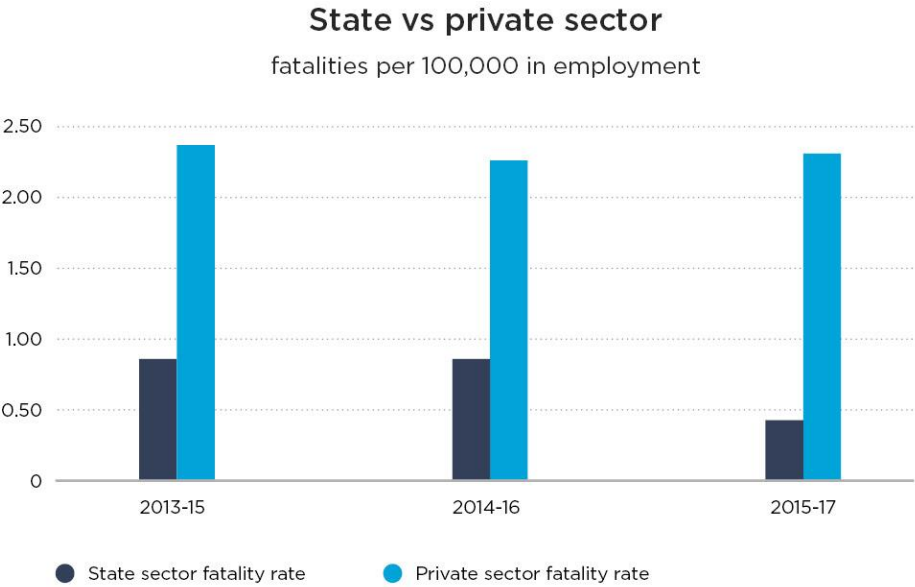
WORKSAFE

Public sector conference

- **Nicole Rosie**
Chief Executive
- **28 August 2018**

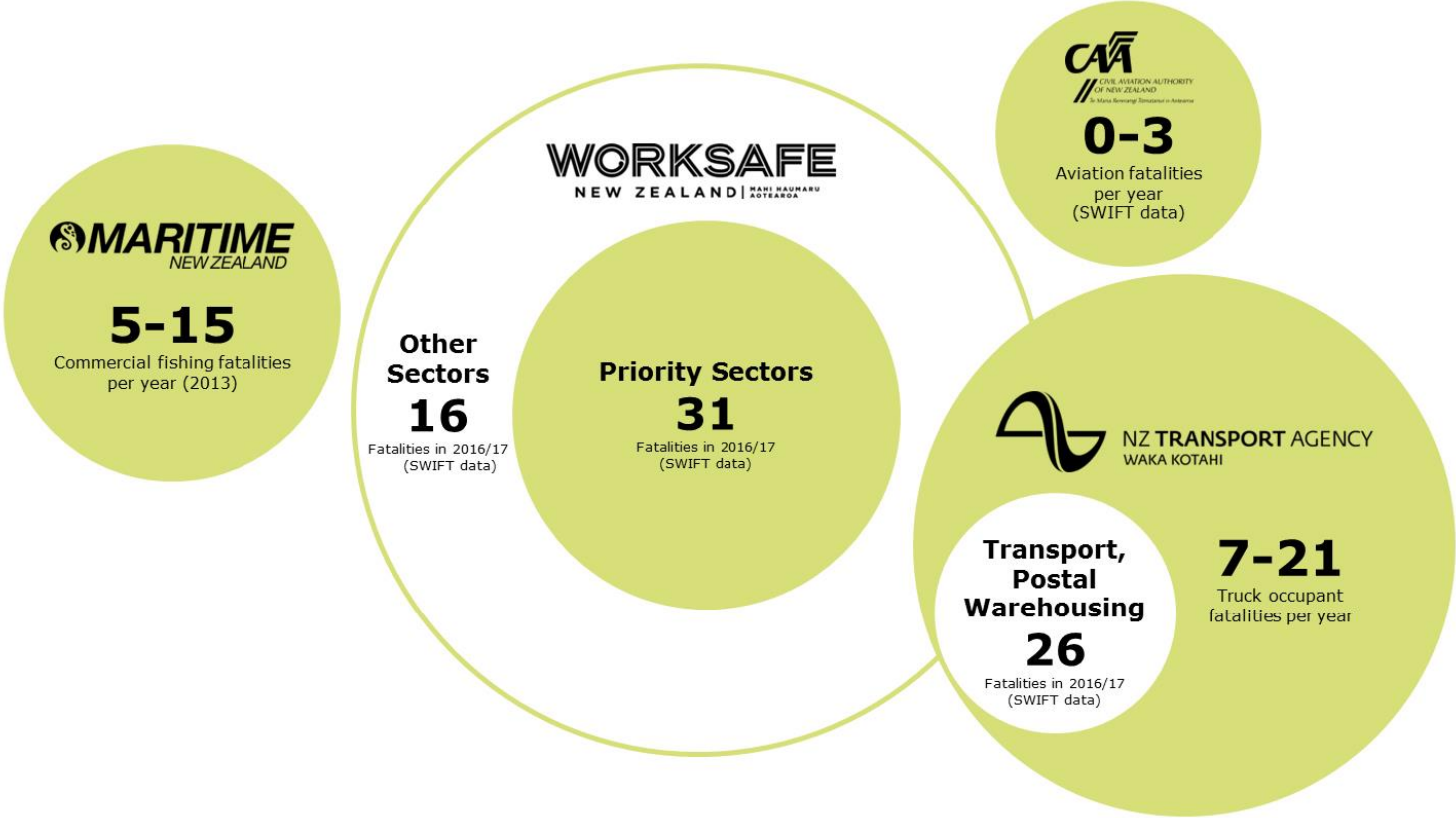
Acute: New Zealand





Indicative data only. Not for operational use. Not for distribution or publication.

Acute: Jurisdiction breakdown





Workplace fatalities in USA

Date range

16/10/2007 28/04/2017

Fatalities by industry

Government - Central
65 100.00%

Industry

- ☐ Financial Services
- ☐ Fishing
- ☐ Forestry
- ☒ Government - Central
- ☐ Government - Municipal
- ☐ Health
- ☐ Hospitality/Tourism
- ☐ Landscaping

Hazard type

- ☐ Select All
- ☐ Animals
- ☐ ATV
- ☐ Aviation Accident
- ☐ Caught between
- ☐ Contact with Electricity
- ☐ Drowned
- ☐ Environment

Total number of fatalities

65

Number of industries

1

Hazard categories

20

Showing fatalities since

20 August, 2009

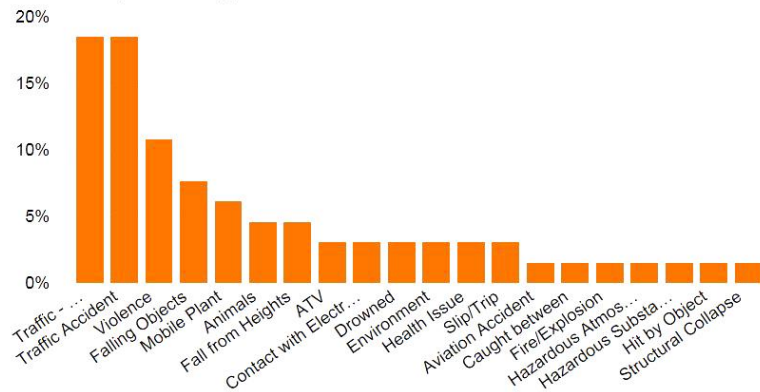
Company description word filter

Search

Hazard description word filter

Search

Fatalities by hazard type



Number of fatalities by industry

60

40

20

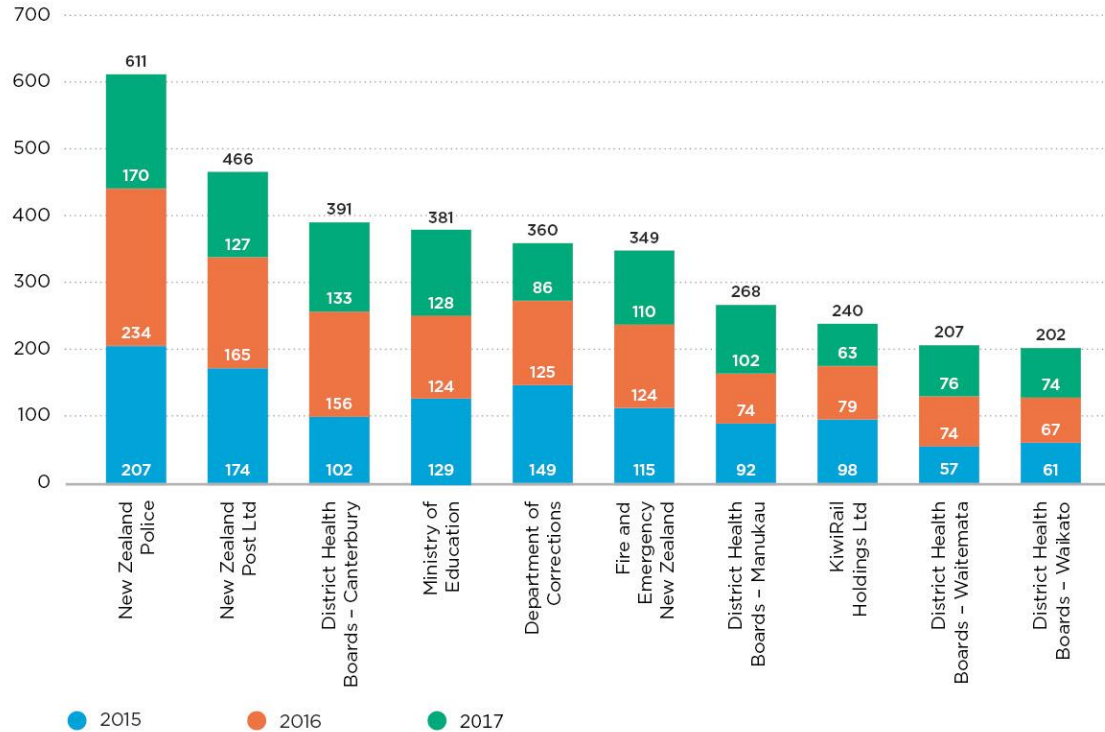
0



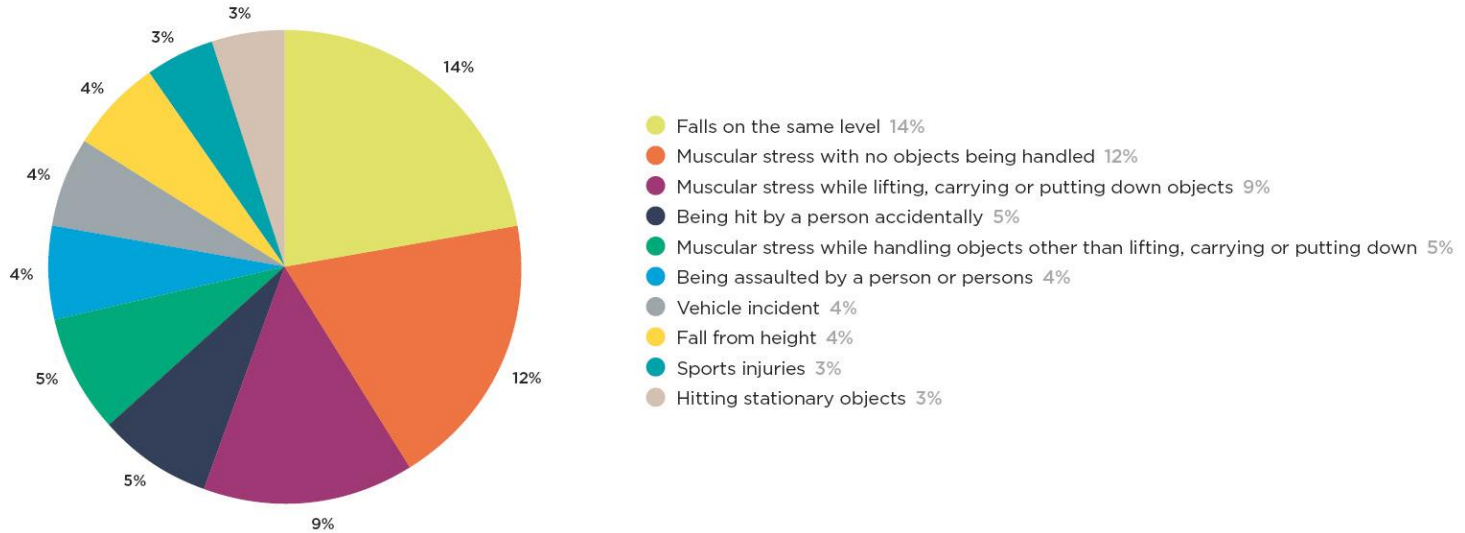
Source: PwC Analysis, Occupational Safety and Health Administration - Fatality Inspection data 2017

Disclaimer: PwC has neither audited nor verified this data and therefore does not ensure its accuracy or completeness

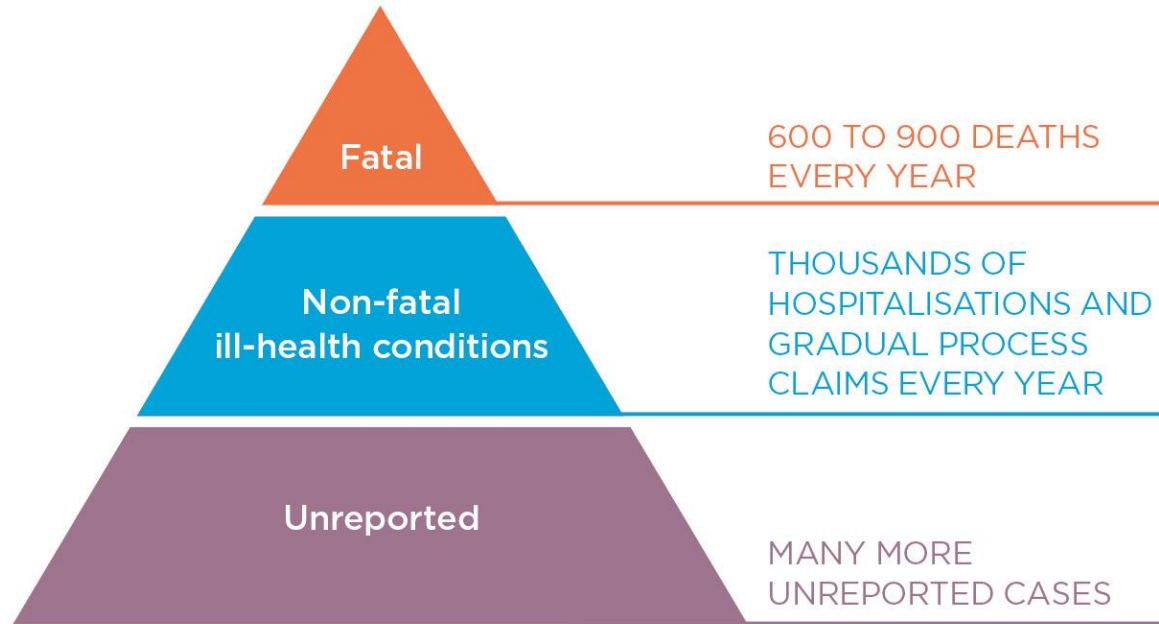
Top 10 public sectors for WAFW injuries: Jan 2015 - Dec 2017



Top 10 public sectors for WAFW injuries: Jan 2015 - Dec 2017



Chronic:
New Zealand context



Chronic: New Zealand context





**1 in 3 workers report
experiencing bullying
or harassment each year**

40,000

notifications of health and safety incidents over the last 4 years



159

were recorded as bullying

HALF REFERRED
TO ANOTHER
AGENCY
(POLICE, ERA)

JUST UNDER
HALF NFA

13
INVESTIGATED -
NO PROSECUTIONS



LEADERSHIP



RISK
MANAGEMENT



WORKER
ENGAGEMENT

An iceberg floating in a blue ocean under a blue sky with white clouds. The tip of the iceberg is above the water, and the much larger base is submerged. The word 'BEHAVIOURS' is in an orange box above the tip, and 'INTENT' is in a green box above the submerged part. A table of intent components is also on the submerged part. Yellow arrows point from text on the right to the visible and submerged parts of the iceberg.

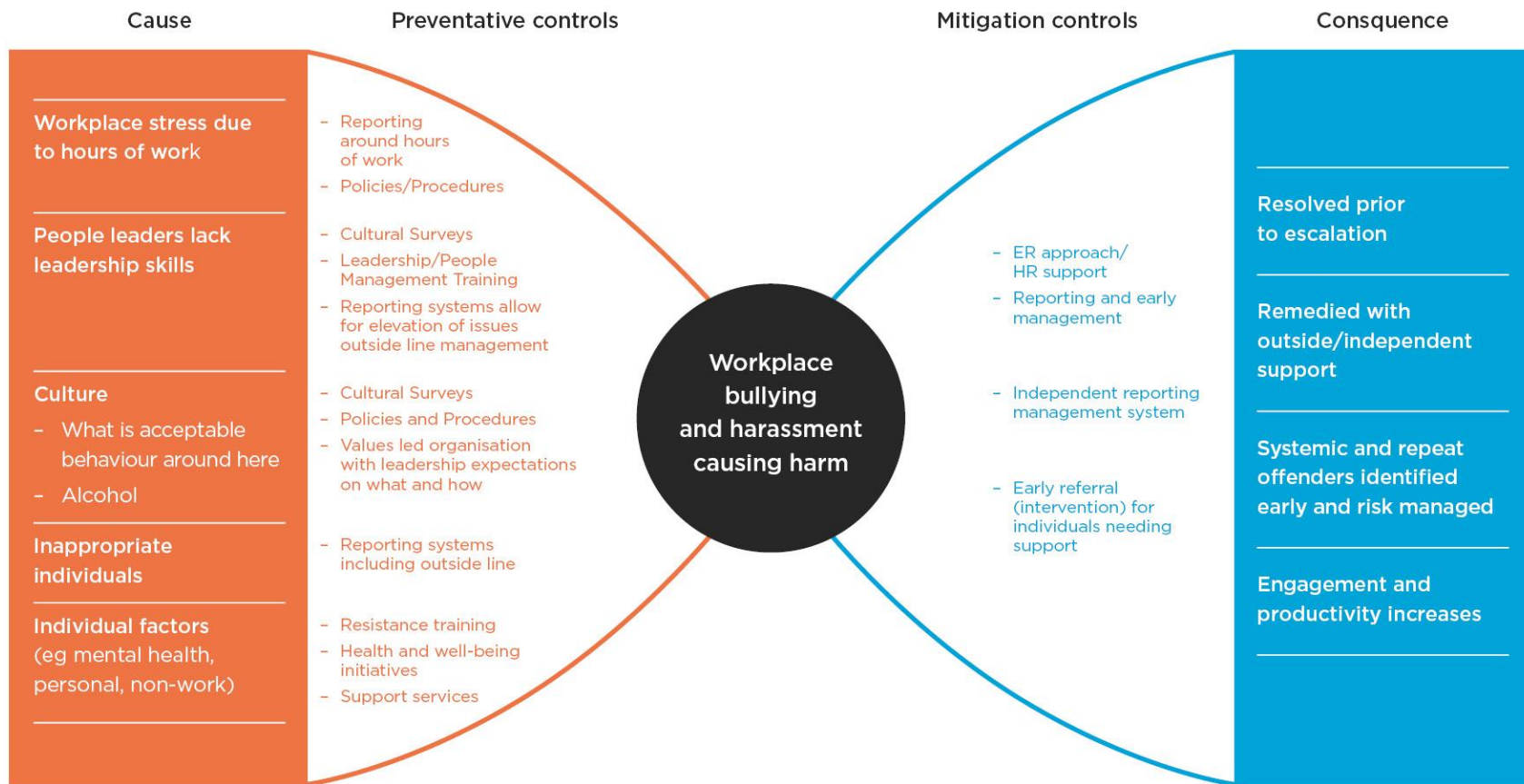
BEHAVIOURS

< This what people see

INTENT

Values	Self thought	World view
Mindset	Strengths	Beliefs
Obstacles		

< This is what you need to focus on



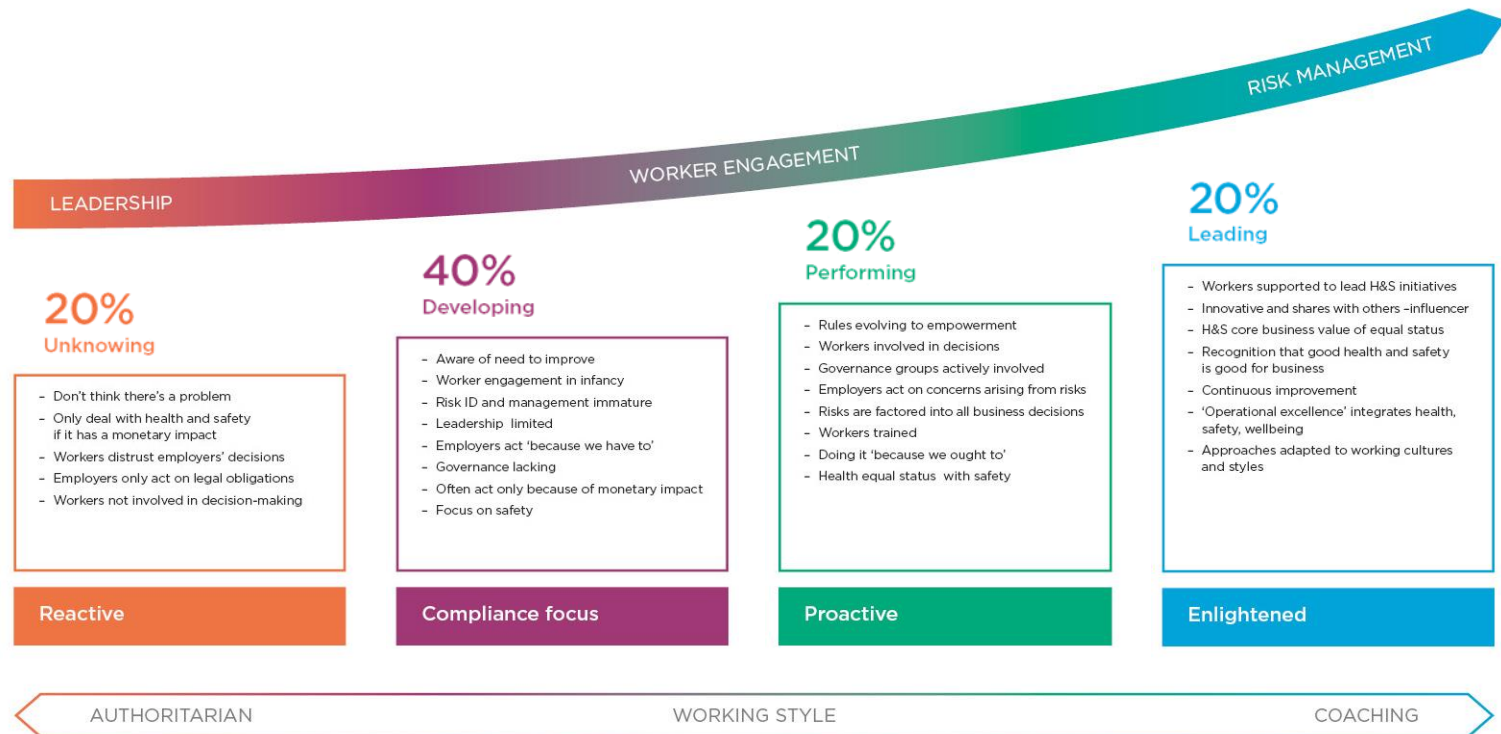


WORKER
ENGAGEMENT

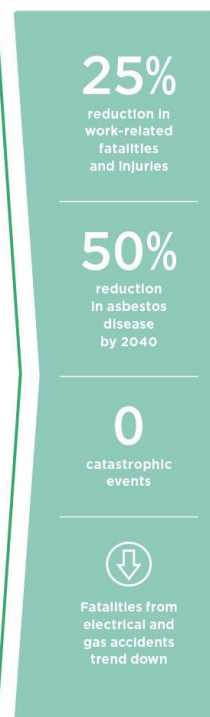
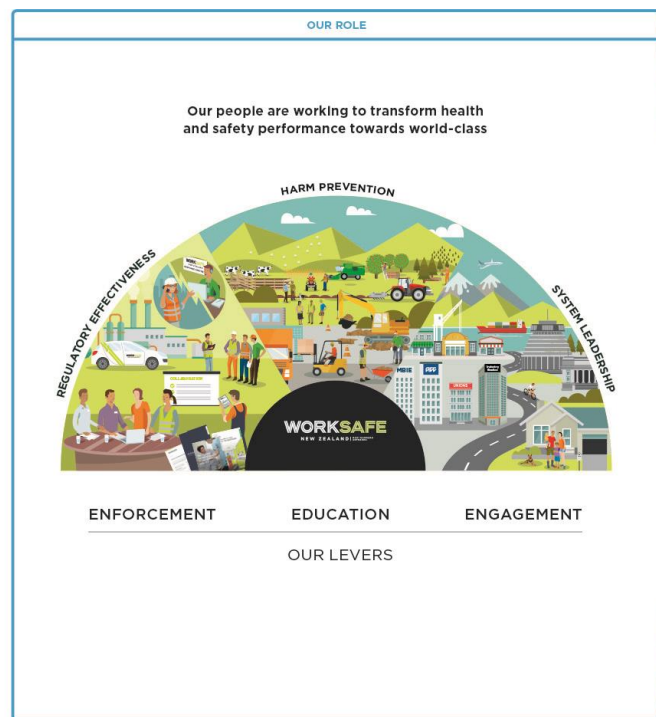


WORKSAFE

New Zealand health and safety system: Maturity model



WorkSafe's strategy: 2018-2022





WORKSAFE



**Getting you home healthy and safe.
That's what we're working for.**

WORKSAFE
NEW ZEALAND | MAHI HAUMARU
AOTEAROA